

AccuCare 9.8U Release Notes

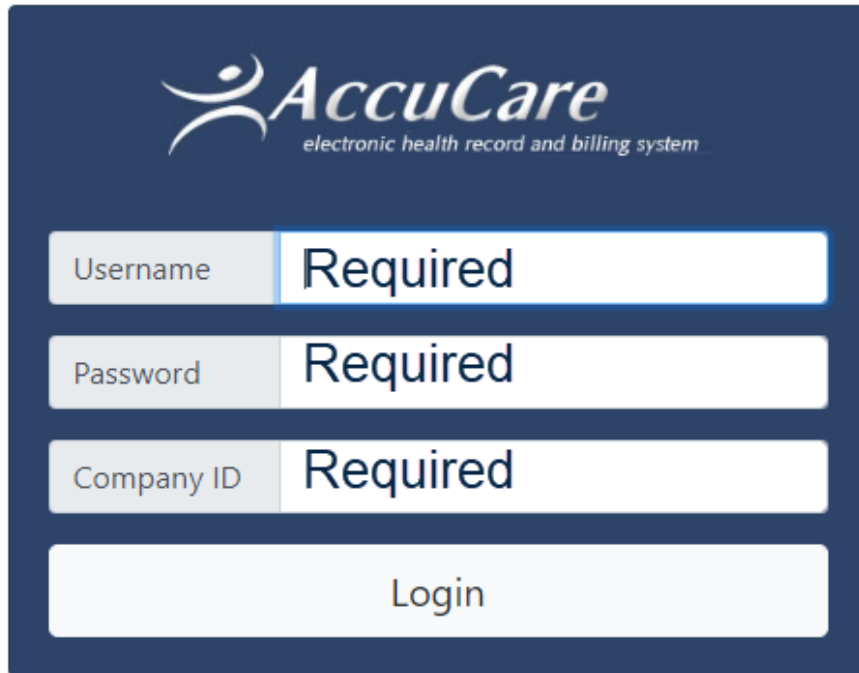
Enhancements and Bug Fixes - Summary

New Secure Login

In an effort to improve our log-in security for our AccuCare Web-based EHR System, we will be providing you with a new dedicated portal page for logging in. Previously, users would be able to log in from the main web site, at www.myaccucare.com. Users will be redirected from their existing bookmarked page to the new dedicated portal page. Users can still bookmark <https://myaccucare.com/login.html> as the new portal page

For your security and privacy protection, you are required to enter in your Username, Password, and Company ID.

New Security Login



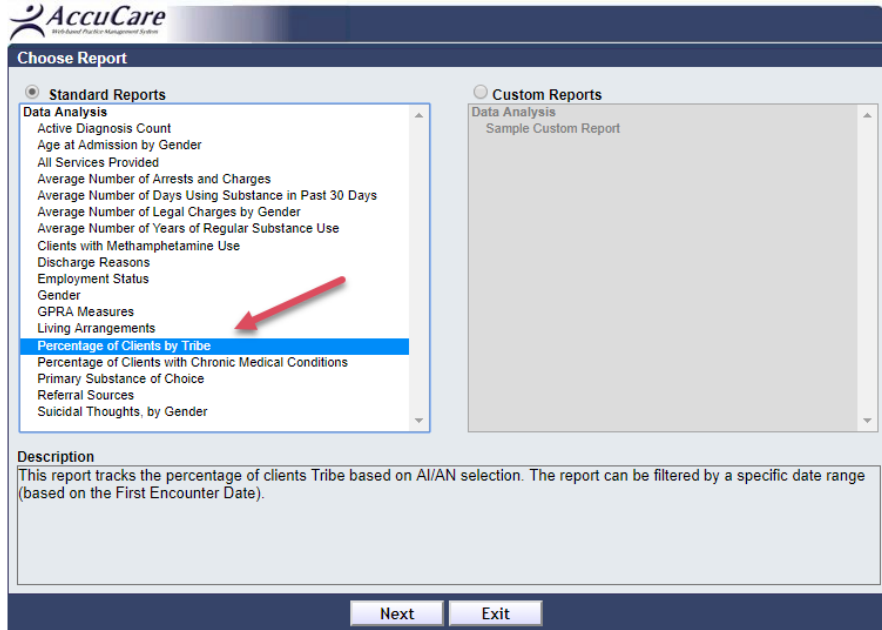
The screenshot shows a login form with the AccuCare logo at the top. The logo consists of a stylized human figure icon followed by the text "AccuCare" and "electronic health record and billing system" below it. The form contains three input fields, each with a label on the left and the word "Required" in the input area. The fields are for "Username", "Password", and "Company ID". Below these fields is a "Login" button.

Username	Required
Password	Required
Company ID	Required
Login	

AccuCare 9.8U Release Notes

Percentage of Client by Tribe add to Standard Reports in Data Analysis module

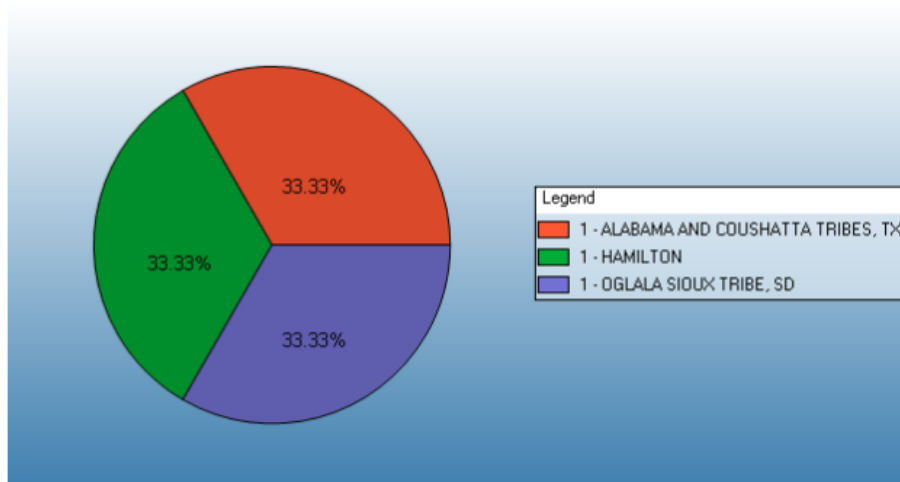
This report tracks the percentage of clients Tribe based on AI/AN Tab selection. The report can be filtered by a specific date range (based on the First Encounter Date).



Percentage of Clients by Tribe

01/01/1900 - 06/06/2079

Report Filters: All Agencies -- All Clients



AccuCare 9.8U Release Notes

OTHER ENHANCEMENTS AND BUG FIXES:

- Updated workflow and data validation for MOTS System Questionnaire:
 - When the Type of Treatment is Addiction Only Addiction/Mental Health only or Mental Health Treatment only then the "Total Number of Dependents" cannot be zero
 - Update Prefill for Marital Status pulled from the Client Intake entry
- Updated System Questionnaire for Illinois DASA/DARTS:
 - Update Prefill for Marital Status pulled from the Client Intake entry
 - Update custom tab label for Demographics>General - from DASA to General (IL)
- Chart Management: fixed issue with client display and buttons being enabled/disabled
- Jump Navigation: When selecting "Support Documents" link, you will be taken to AccuCare support
- Custom Forms: When filling out a published custom form you will be able to resize window width enough to see all fields.
- Client Intake: Minor fixes to Export to Excel feature, specifically for Multi-Dimensional Assessment